



TROPICAL STORM HARVEY BRIEFING

2:00 PM CDT
Tuesday, August 29, 2017

Prepared by:
NWS LIX



Situation Overview



New Orleans

WEATHER FORECAST OFFICE

Tropical Storm Harvey

New Information

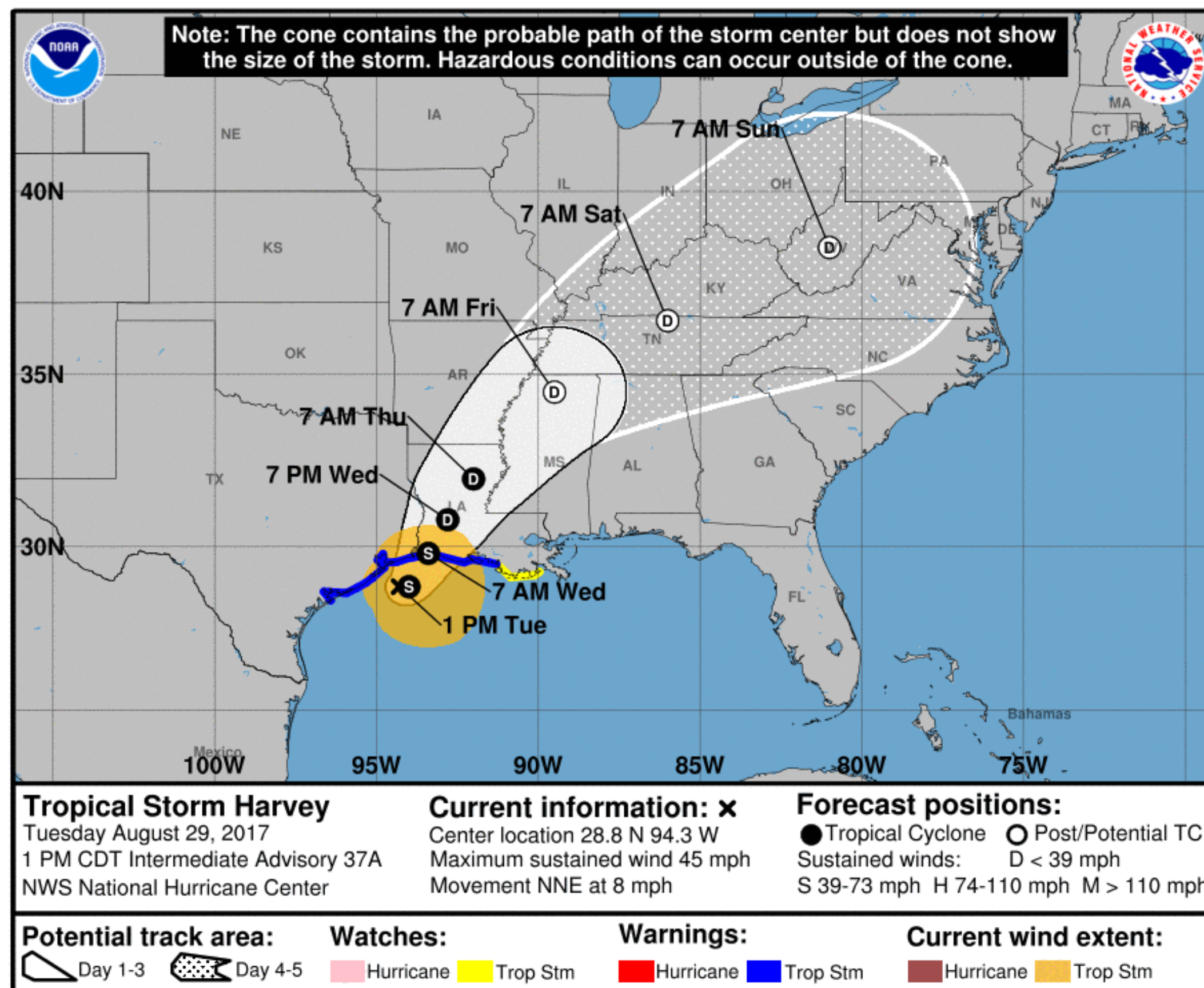
- Moving NNE
- Max sustained wind 45 mph

Immediate Concerns

- Heavy rain possibly leading to flash flooding; isolated tornadoes.
- Tropical Storm Watch
Grand Isle to Morgan City

Long-Term Concerns

- Still could see locally heavy rain through much of the week

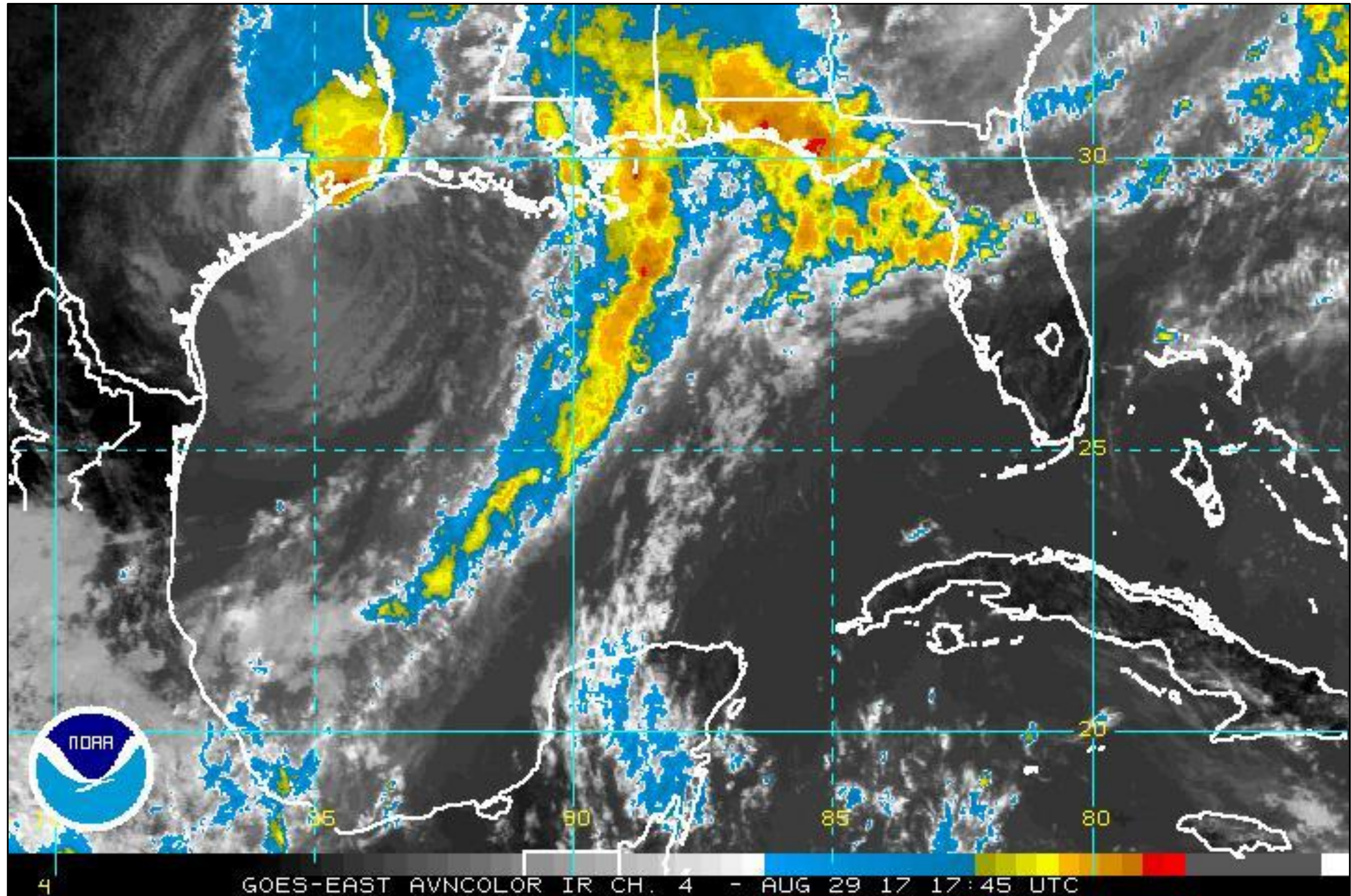


Current Satellite View



New Orleans
WEATHER FORECAST OFFICE

Tropical Storm Harvey



8/29/2017 1:32 PM

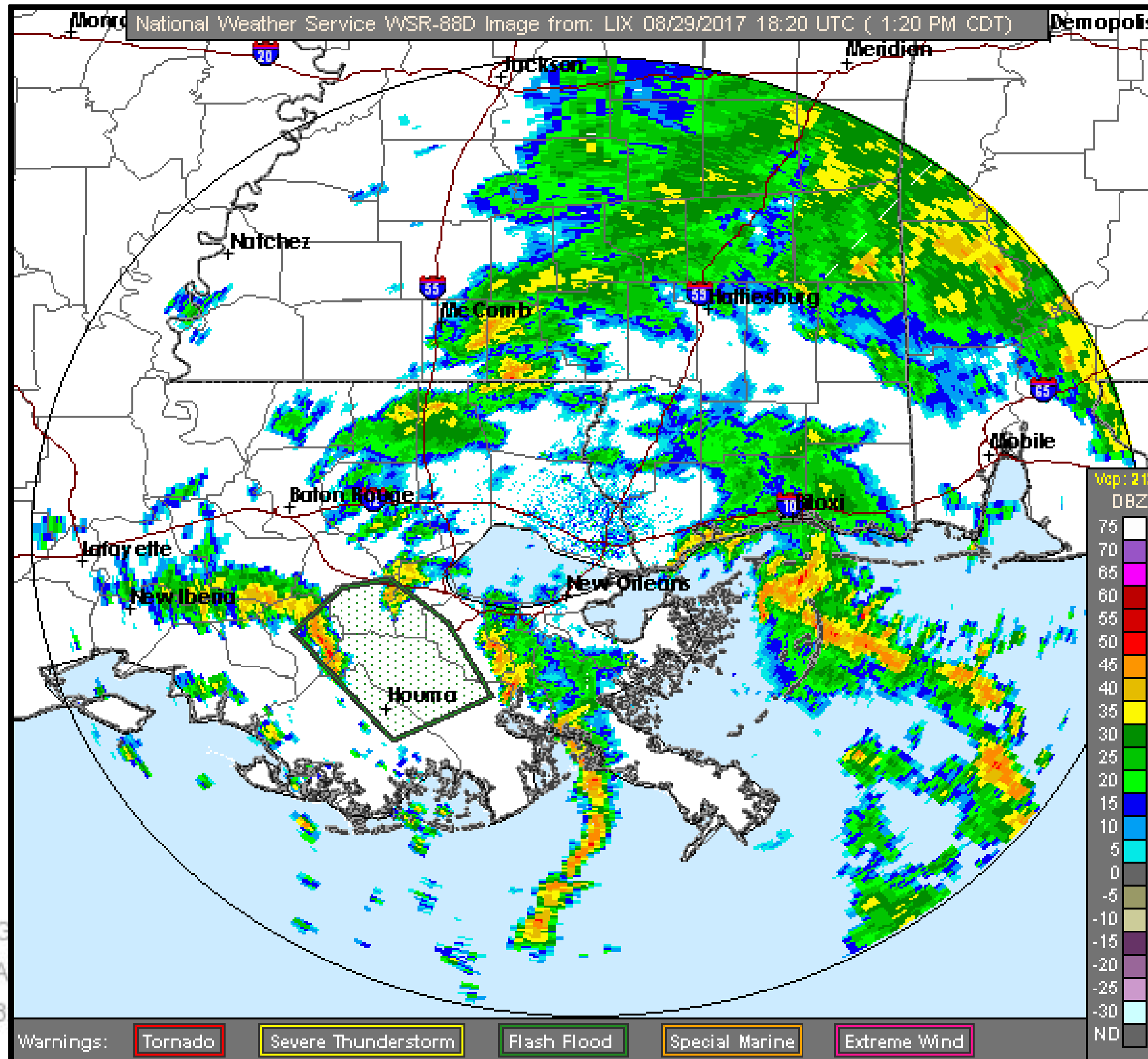
www.weather.gov/NewOrleans

Current Radar View



New Orleans
WEATHER FORECAST OFFICE

Tropical Storm Harvey



Scattered to numerous showers with embedded thunderstorms:

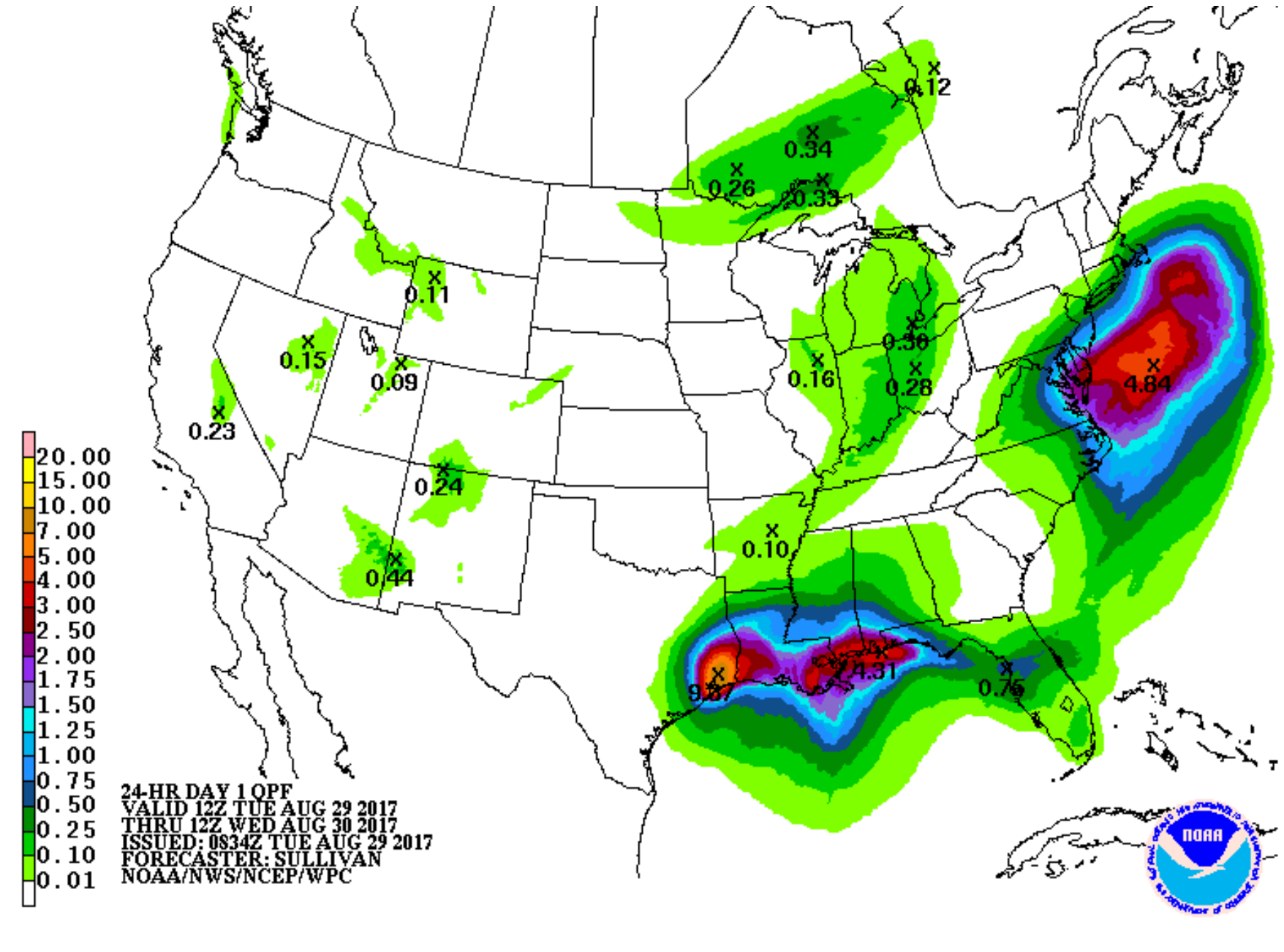
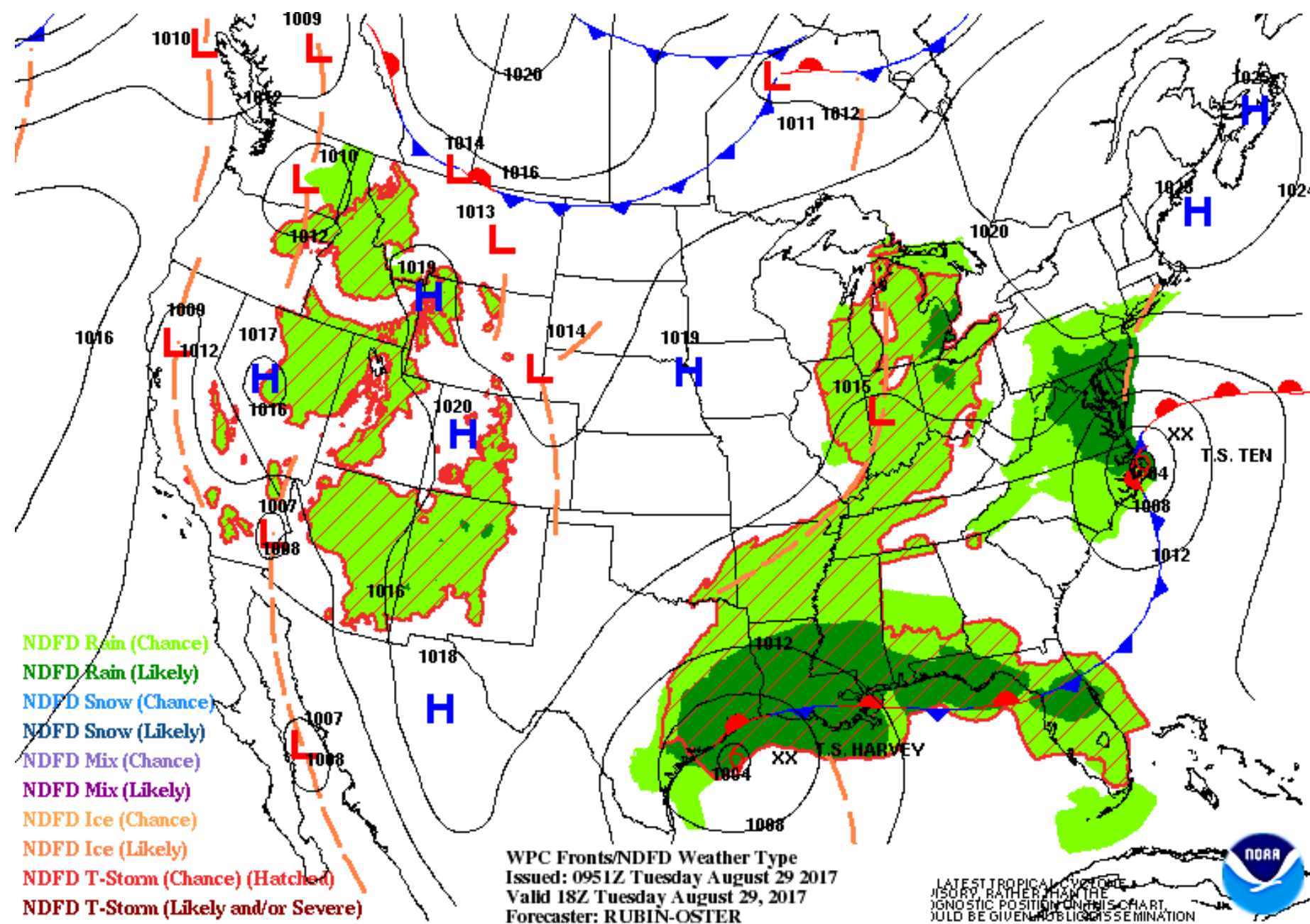
- light to moderate showers dropping 0.25 to 1" an hour.
- Line of moderate to heavy rain dropping 1-2 inches in an hour. Moving to the north-northeast around 15 to 20 mph.

Forecast & Rainfall: Today



New Orleans
WEATHER FORECAST OFFICE

Tropical Storm Harvey



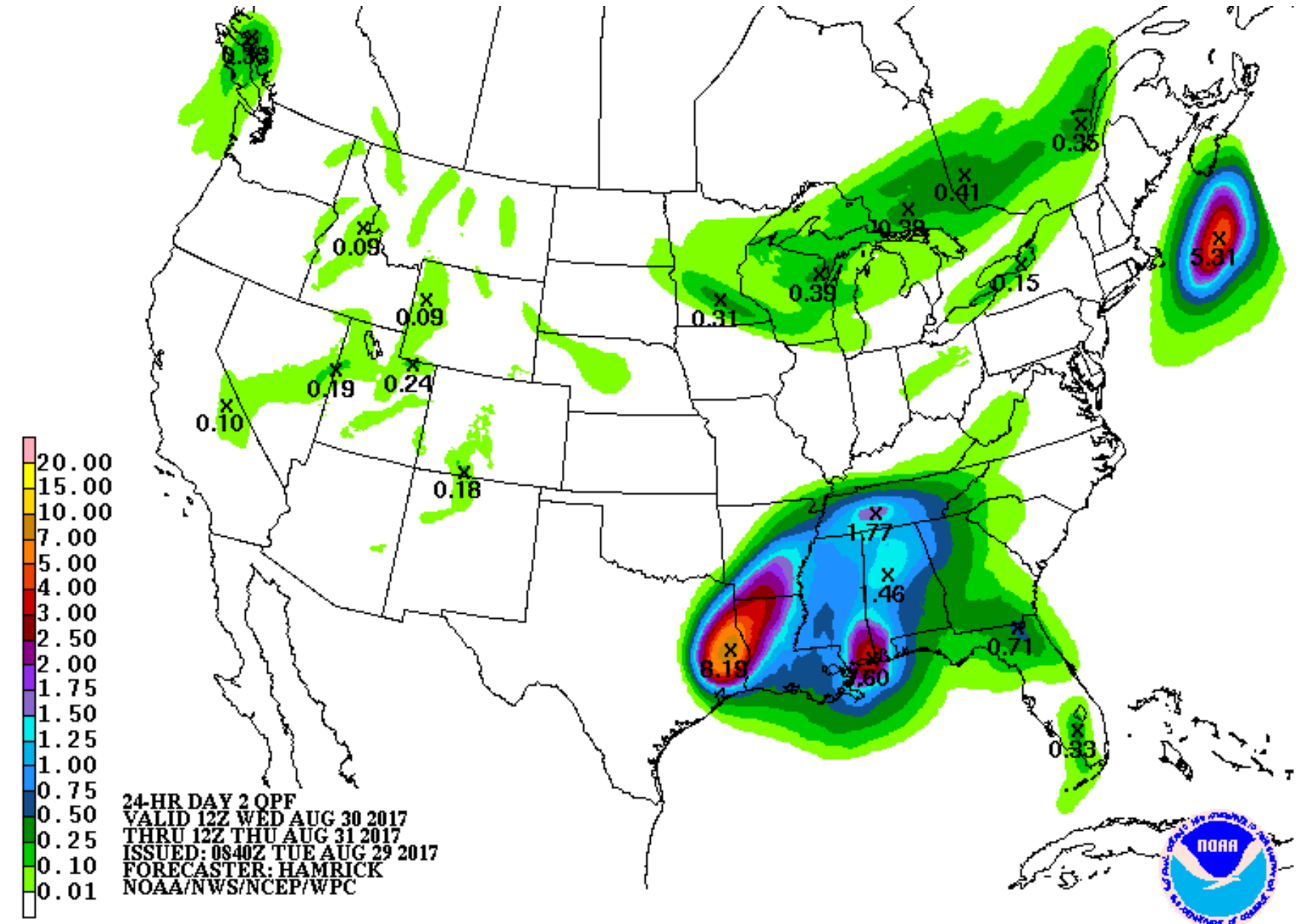
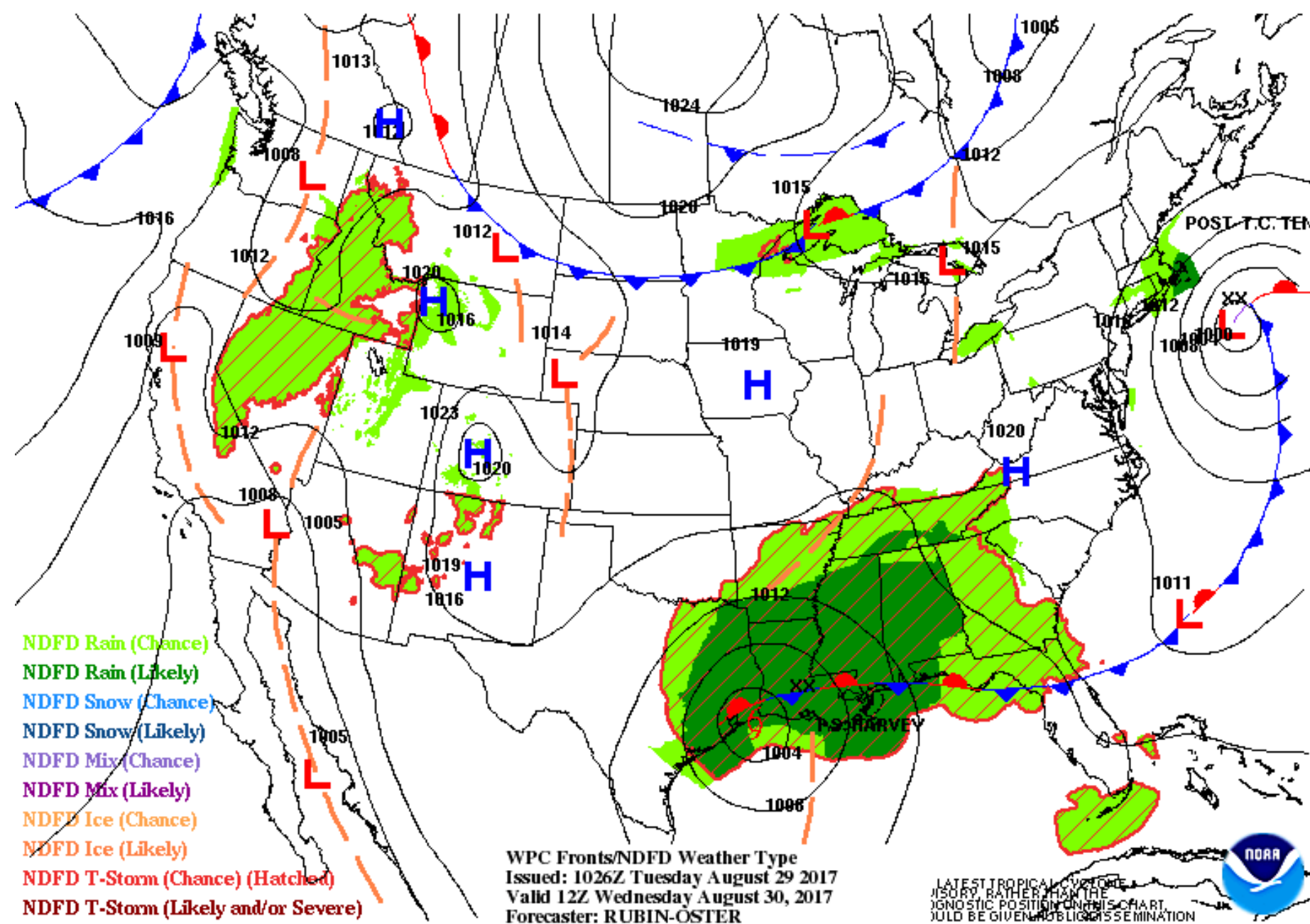
- Frontal boundary continues to serve as a focus for rainfall.
 - Locally heavy rain concern is increasing across coastal Mississippi and into southeast Louisiana along this boundary
- Harvey has started to turn to the northeast.
- Shower and thunderstorm activity due to Harvey will continue across the area. Locally heavy rain expected to develop this evening and overnight across coastal Mississippi and into southeast Louisiana

Forecast & Rainfall: Wednesday



New Orleans
WEATHER FORECAST OFFICE

Tropical Storm Harvey



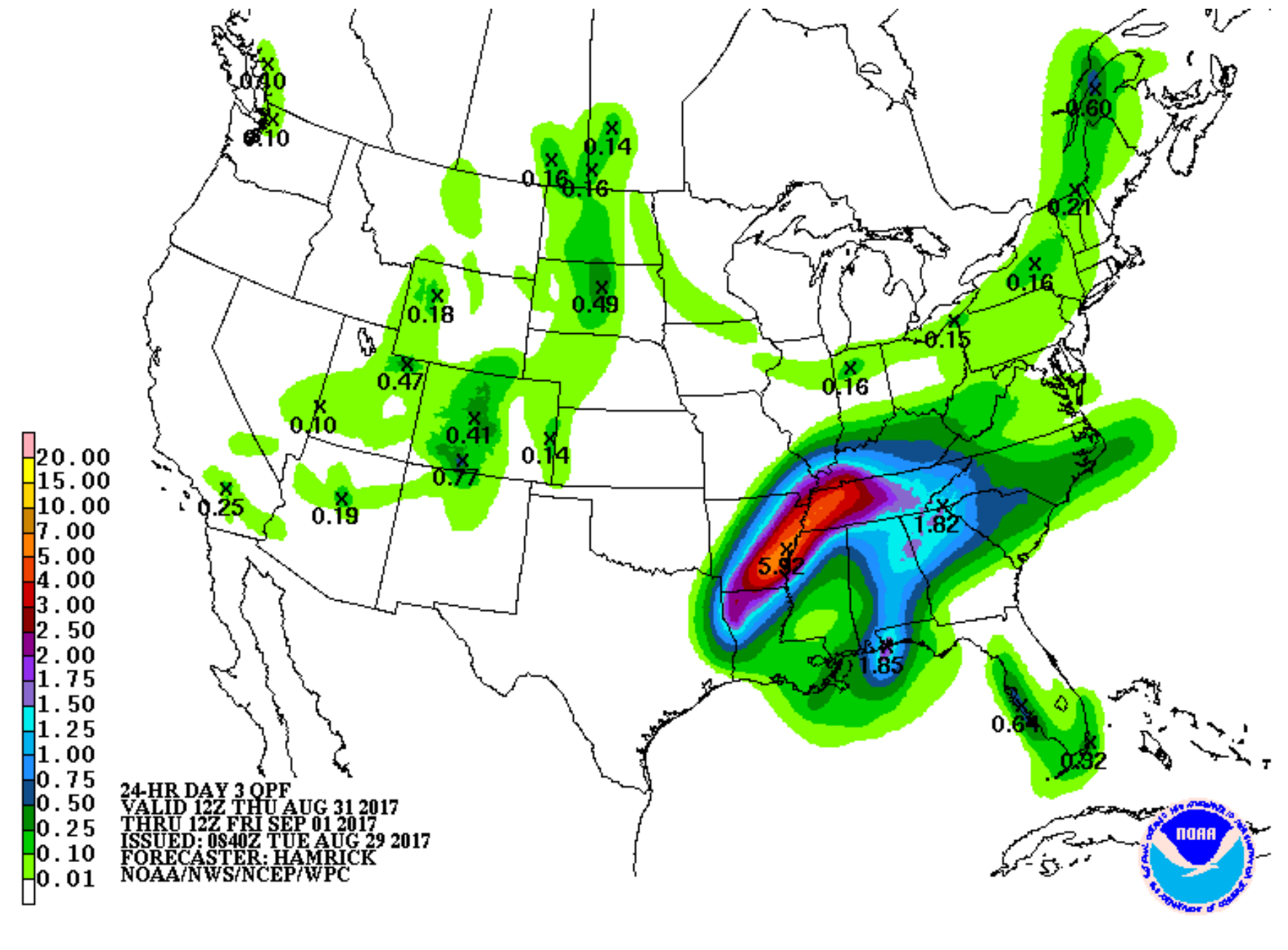
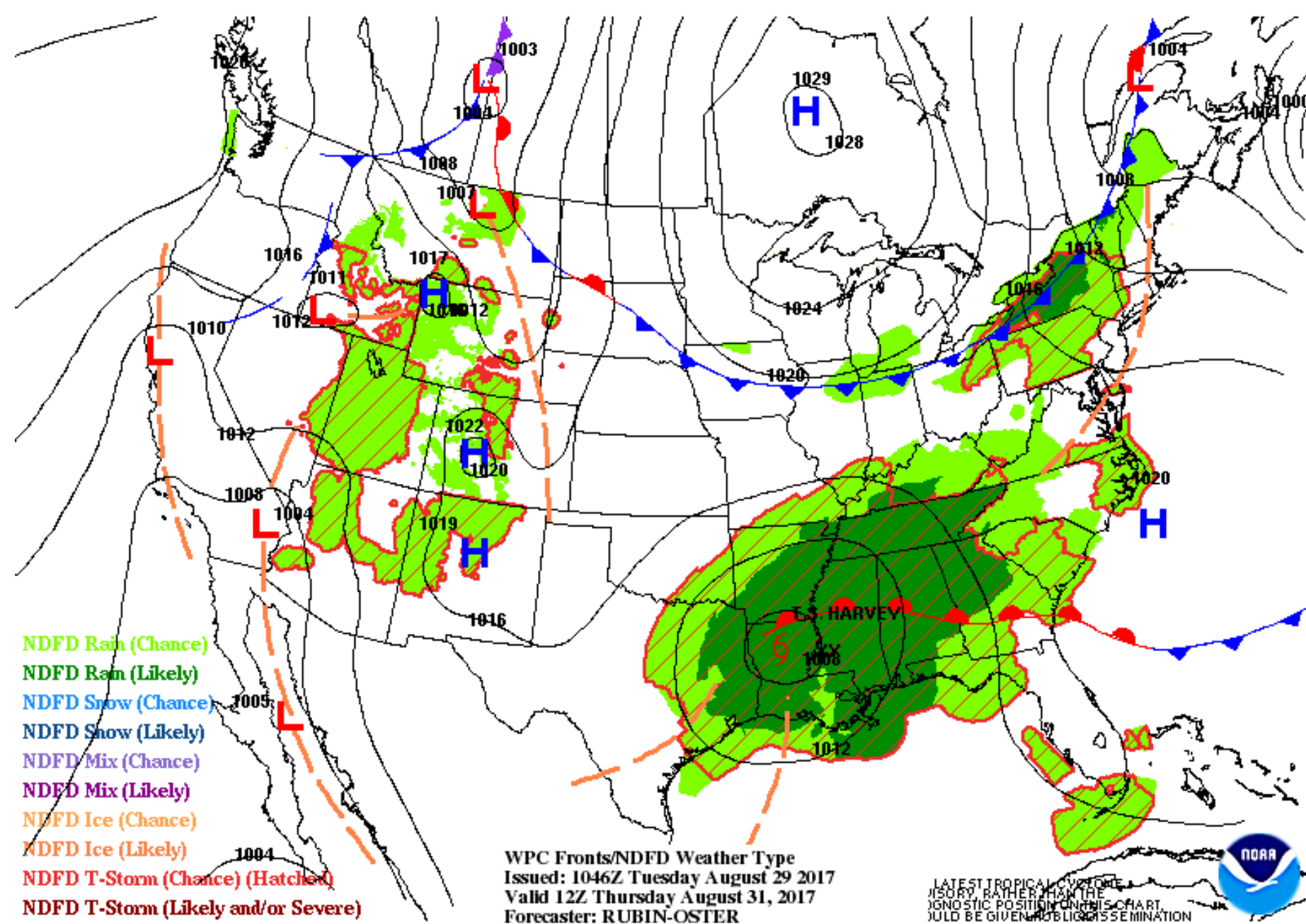
- Harvey near or on the coast of southwest LA.
- Tropical moisture from Harvey already in place however dry air will try to wrap around during the day causing the heavier rain bands to possibly slide more to the east into coastal MS.
 - If Harvey doesn't push as far east then the rain bands will stay more over southeast LA

Forecast & Rainfall: Thursday



New Orleans
WEATHER FORECAST OFFICE

Tropical Storm Harvey



- Harvey moving into northern Louisiana.
- Drier air tries to wrap around and should continue to push the deeper moisture east of the area however showers and thunderstorms will still impact the area with locally heavy rain possible. We will continue to evaluate model guidance on the trend of pushing heavier rain eastward.

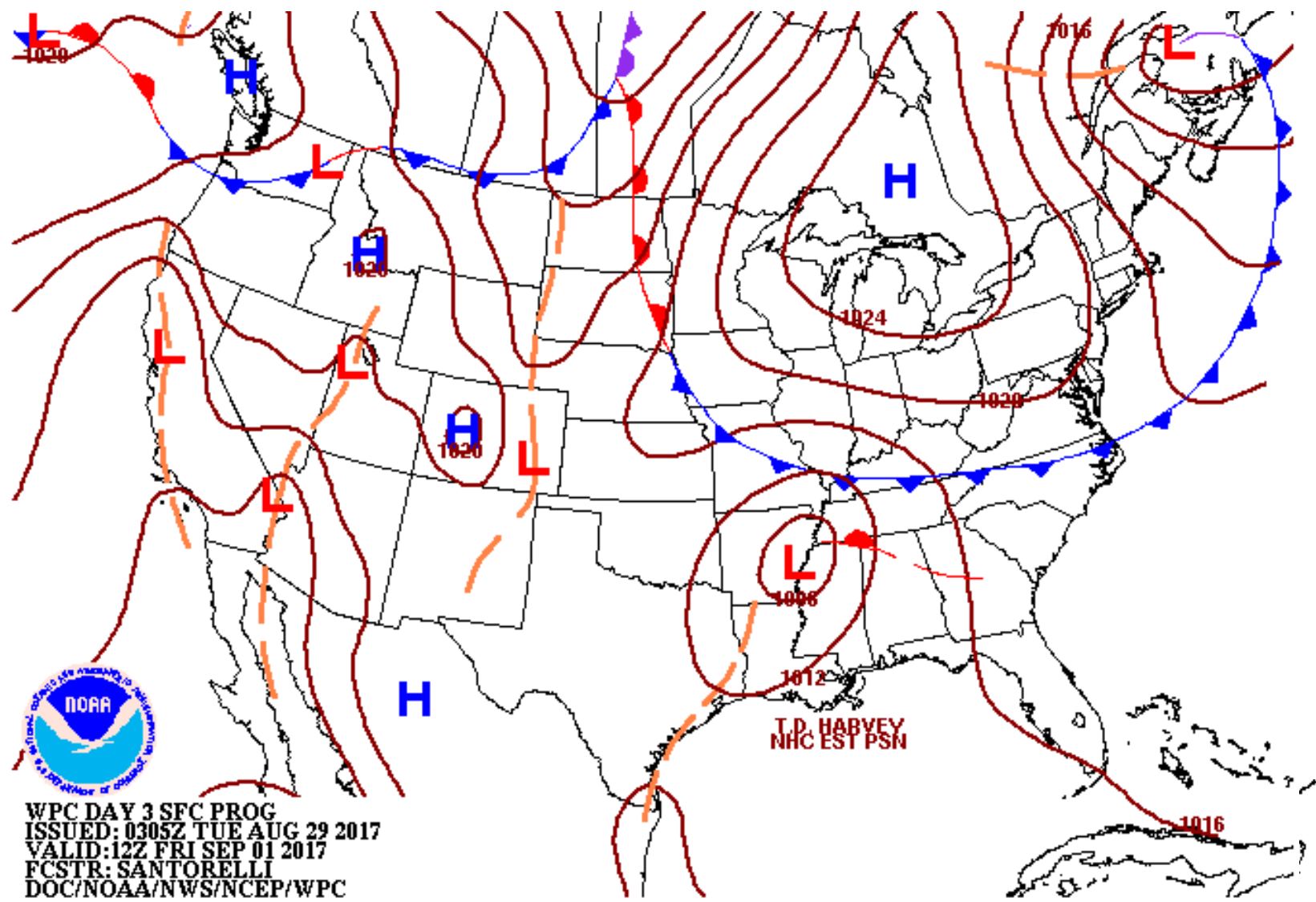
Forecast & Rainfall: Friday & Saturday



New Orleans

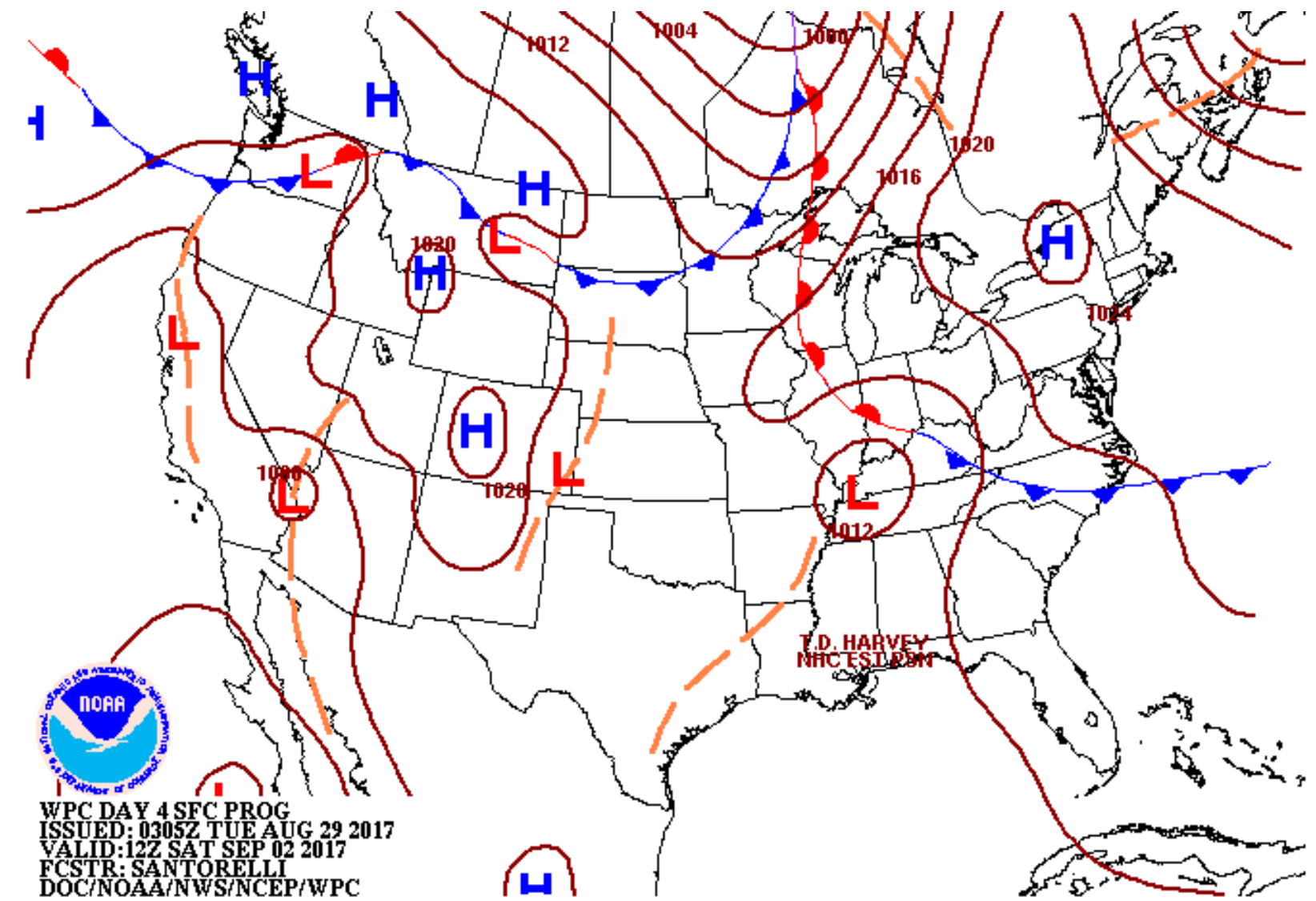
WEATHER FORECAST OFFICE

Tropical Storm Harvey



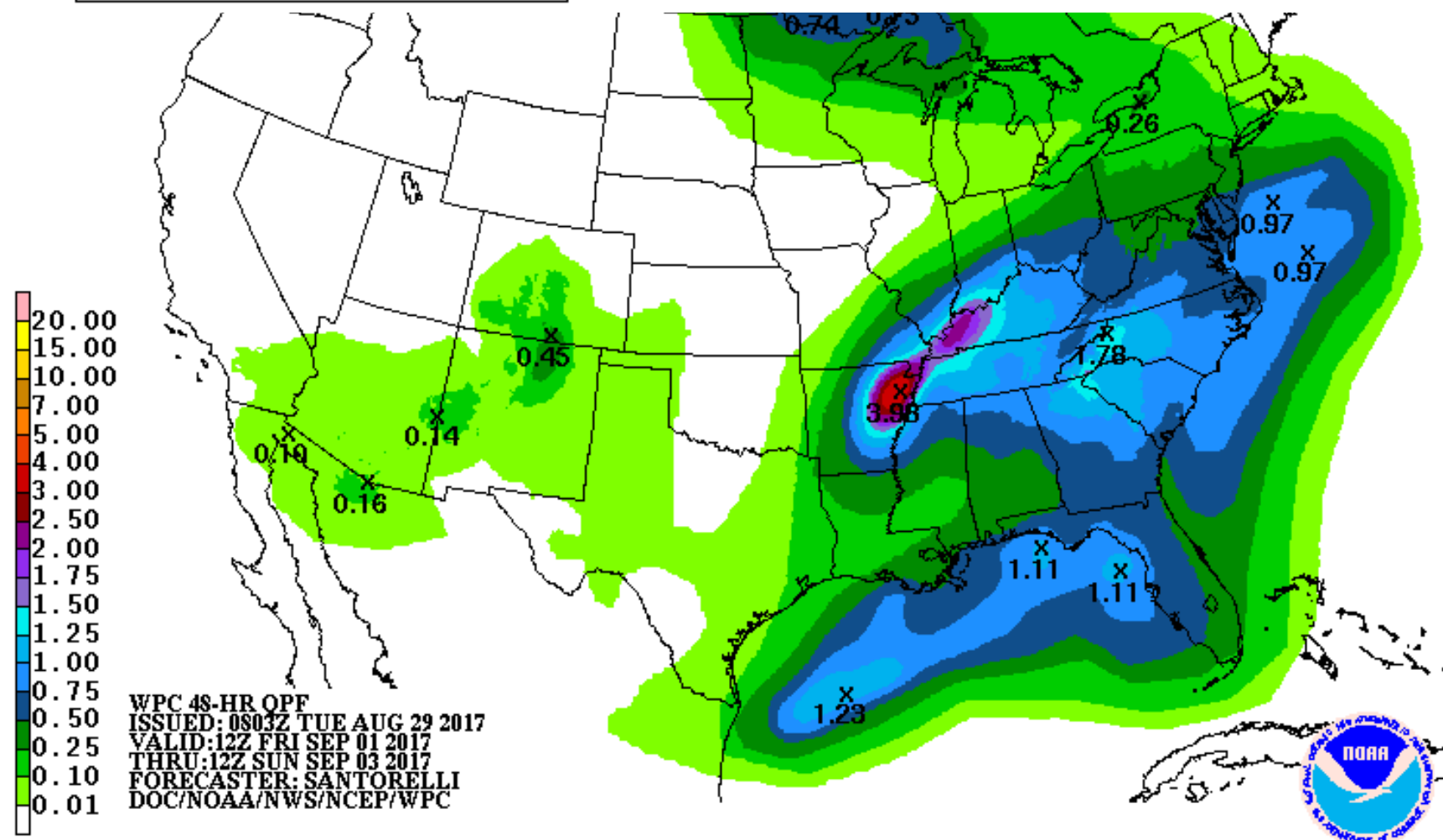
WPC DAY 3 SFC PROG
ISSUED: 0305Z TUE AUG 29 2017
VALID: 12Z FRI SEP 01 2017
FCSTR: SANTORELLI
DOC/NOAA/NWS/NCEP/WPC

For tropical cyclone information, please see the latest advisories from the NHC.



WPC DAY 4 SFC PROG
ISSUED: 0305Z TUE AUG 29 2017
VALID: 12Z SAT SEP 02 2017
FCSTR: SANTORELLI
DOC/NOAA/NWS/NCEP/WPC

For tropical cyclone information, please see the latest advisories from the NHC.



WPC 48-HR OPF
ISSUED: 0803Z TUE AUG 29 2017
VALID: 12Z FRI SEP 01 2017
THRU: 12Z SUN SEP 03 2017
FORECASTER: SANTORELLI
DOC/NOAA/NWS/NCEP/WPC

- Likely Harvey remnants moving through Arkansas and into Tennessee.
- Drier air will move into the region and conditions should begin to return to more of a typical Summer pattern with scattered showers and thunderstorms.

Expected Storm Total Rainfall

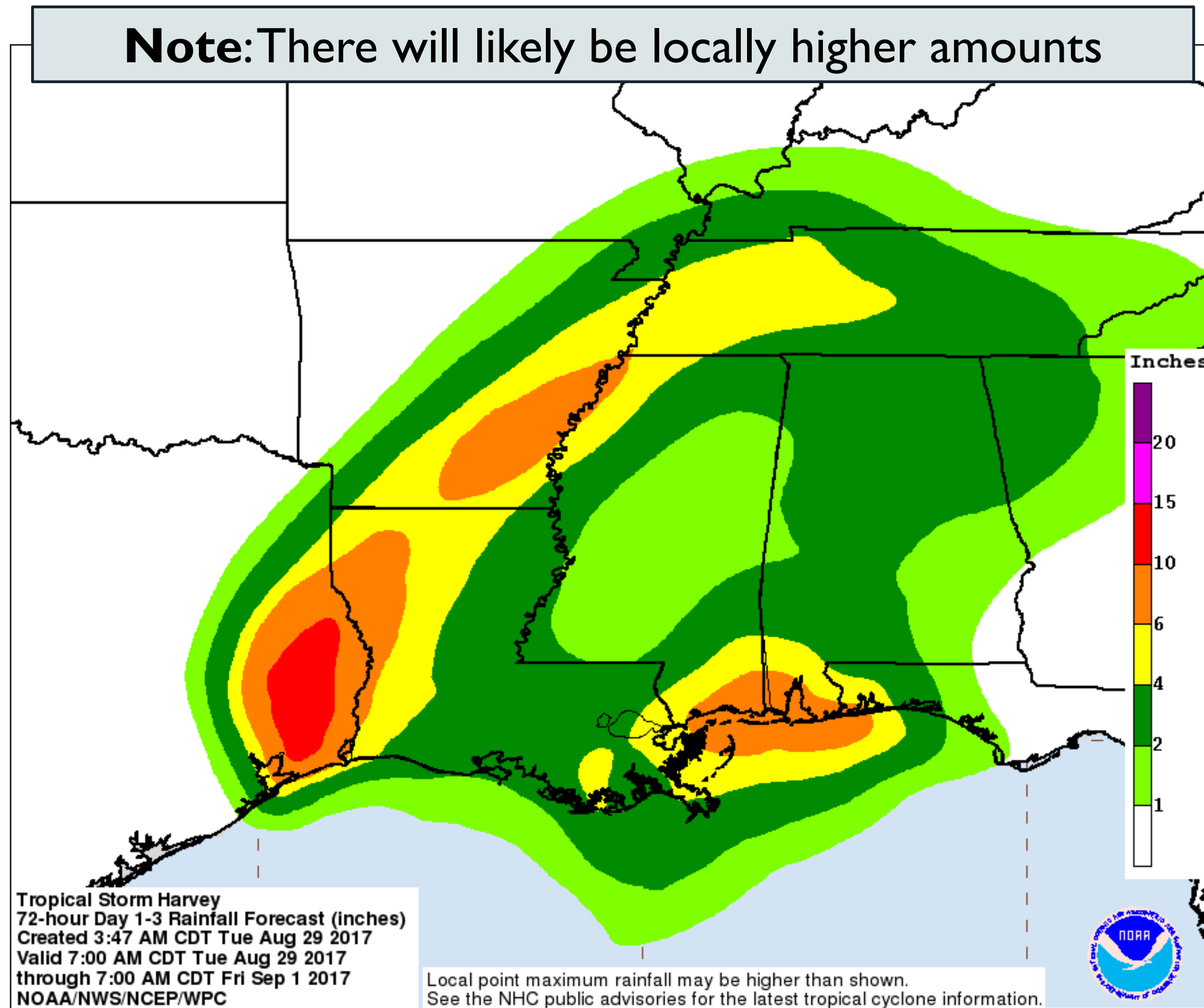


New Orleans
WEATHER FORECAST OFFICE

Tropical Storm Harvey

- Storm total rainfall forecast valid Today through Thursday
 - Locally, most rain will occur tonight and Wednesday

Note: There will likely be locally higher amounts

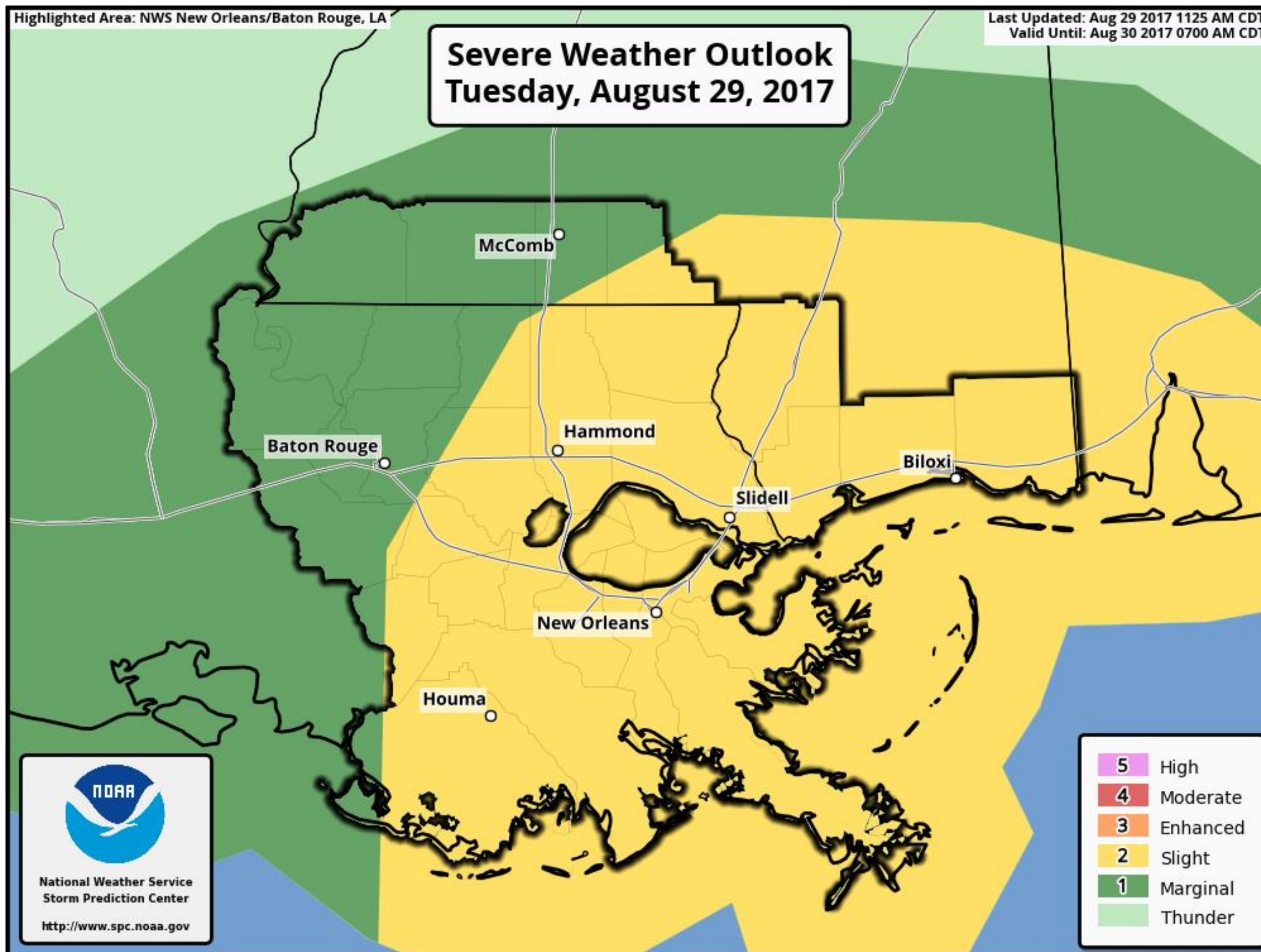


Tornado Potential



New Orleans
WEATHER FORECAST OFFICE

Tropical Storm Harvey



- Isolated tornadoes possible especially in any rain bands

Summary - Forecast



New Orleans
WEATHER FORECAST OFFICE

Tropical Storm Harvey

- Tropical Storm Harvey is turning to the northeast and is expected to approach the southwest Louisiana coast overnight tonight and then central Louisiana late Wednesday evening.
- Only slight strengthening expected due to limited time over the water.
- Tropical Storm Watch/Warnings in effect from Grand Isle westward for winds of up to 45 mph.
- Even though Harvey is expected to move a tad further east due to it taking on different characteristics the impacts are not expected to change much at this time.



Tropical Storm Harvey

■ **Heavy Rainfall / Flooding Primary Threat**

- Additional 4 to 8 inches of rain with locally higher amounts expected.
 - *** **STORM TOTAL** rainfall of 5 to 10 inches of rain with locally higher amounts. ***
- Some of the rainfall will likely occur in short periods of time potentially leading to Flash Flooding
- Flash Flood Watch is in effect through Thursday to give notice to the potential of Flash Flooding.
- Often good at the big picture, very tough to tell where heavy rain bands will set up in advance, be ready for Flash Flood Warnings.

■ **Tornadoes**

- Isolated tornadoes possible within rain bands.

■ **Tides**

- Tides expected to be 1 to 2 feet above normal through Thursday. Some low lying roadways near the coast may experience flooding at high tide Wednesday.

■ **Winds**

- Sustained tropical storm winds possible near the coast from Grand Isle to Morgan City tonight and tomorrow. Elsewhere tropical storm winds not expected at this time, however will monitor any changes to forecast track or intensity. Tropical storm force wind gusts will be possible in squalls.



TROPICAL STORM HARVEY BRIEFING

Please contact WFO New Orleans at
504-522-7330 or 985-649-0429
or through the “LIXchat” NWSChatroom

*The Next Briefing Will Be:
Wednesday at 2:00 PM CDT*

You can get the latest graphics and information on this storm at www.hurricanes.gov



NWSNewOrleans

www.weather.gov/NewOrleans